

COMPACT



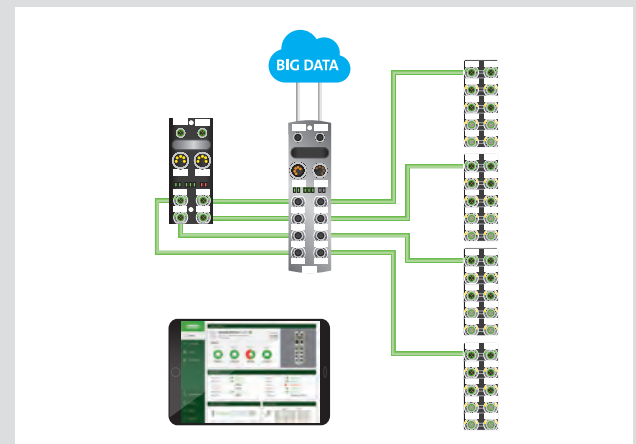
CUBE67 DIAGNOSTIC GATEWAY

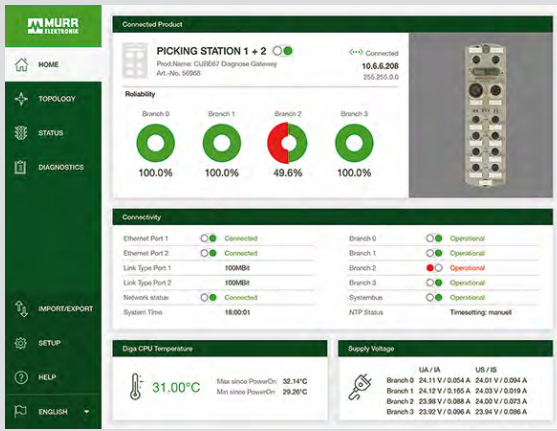
Murrelektronik's Cube67 fieldbus system offers extensive diagnostic options. The diagnostics gateway allows Plug & Play access to this data via an Ethernet interface. This solution is easy to implement, provides clear instructions in case of failure and allows for maximum machine availability.

Designers and Engineers can use the diagnostic gateway to examine the Cube67 system topology and detect faults that may have occurred during installation.

Technicians are able to quickly identify errors by temporarily integrating the diagnostics gateway into the system. It also provides assistance with completing machine acceptance tests. Permanent integration of the module allows them to troubleshoot remotely. This allows them to react to situations before they become problems. In a best-case scenario, troubleshooting instructions have already been implemented, allowing the technician to bring the correct parts with him when he comes for the repair.

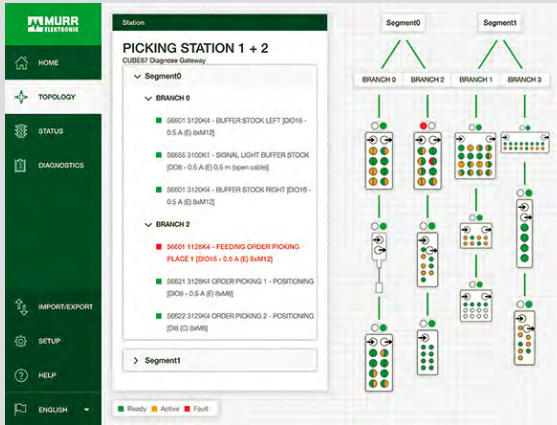
- Representative data from the Cube67 bus node is transmitted
 - Topology
 - Error Messages
 - System Status
- Automatic topology detection and diagnostics
- Easily installed between the Cube67 bus node and up to four branches of a Cube67 installation
- Backward compatibility with all Cube67 bus nodes
- An internal "Logbook" stores both diagnostic memory and errors
- Protocol independent





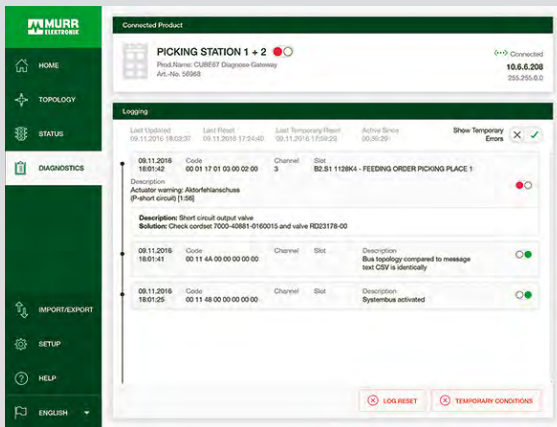
System Overview

The user is given an easy to understand system overview of the Cube system and the diagnostic gateway at a glance including connection data, system voltages and currents.



Topology at a Glance

Clear representation of the live system topology, in both tabular and graphic form, showing all processes and diagnostic data.



From Diagnostics to Solutions!

Detailed diagnostic and system messages (including plain text explanations and error descriptions) along with information on how to eliminate the error are shown under the Diagnostics tab.

Article Number	Description
56968	Cube67 Diagnostic Gateway
341946	.3m Cube67 Bus Node to Diagnostic Gateway Cordset
7000-15041-0000000	Terminating Resistor
58627	M12 Blind Plug with Male Threads (sold in quantities of 10)
55384	7/8" Blind Plug with Male Threads
55385	7/8" Blind Plug with Female Threads
US-DIGA-KIT	Set consisting of 1 x Cube67 Diagnostic Gateway (56986), 4 x .3m Cube67 Bus Node to Diagnostic Gateway Cordset (341946) and 1 x Ethernet cable (7700-44711-S4U0150)