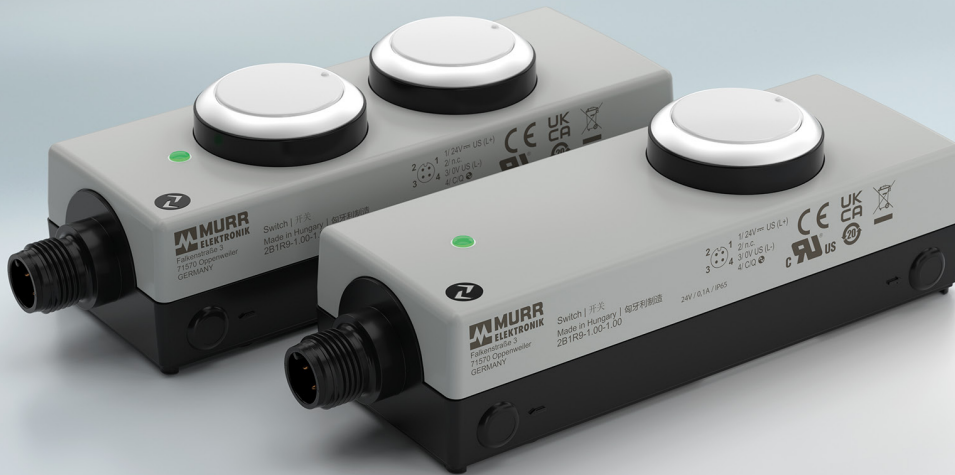
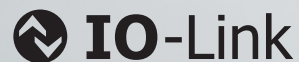


Control Devices



- **Economical:** Lower your on hand inventory thanks to a wide range of configuration options for push button colors, brightness and flashing modes
- **Clear:** Laser printer compatible label sheets (sold separately) for labelling buttons
- **Practical:** Connects to standard aluminium profiles
- **Communication:** IO-Link enabled
- **Sealed:** IP65 rated housing
- **Secure wiring:** Quick and easy connection via an M12 port



Perform simple control tasks with our compact push buttons with a built in IO-Link interface.

With the aid of Murrelektronik's IO-Link enabled command devices, simple control tasks can be performed on site. The push buttons, with an IP65 rated housing, are ideal for connecting to standard aluminium profiles.

These compact IO-Link command devices have an M12 connection that allows them to be easily connected. Thanks to their IO-Link interface, they can be integrated into any interface and can be customized remotely with a wide range of functions.

Related MURRELEKTRONIK Products

Mico



Modlight



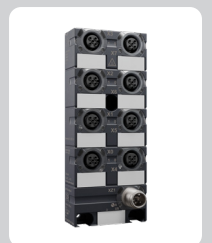
MIRO Safe+



Impact67 Pro



IO-Link Hub



IO-Link 1 P-Button 42
1NO L M12(4)



IO-Link 2 P-Button 42
2NO L M12(4)



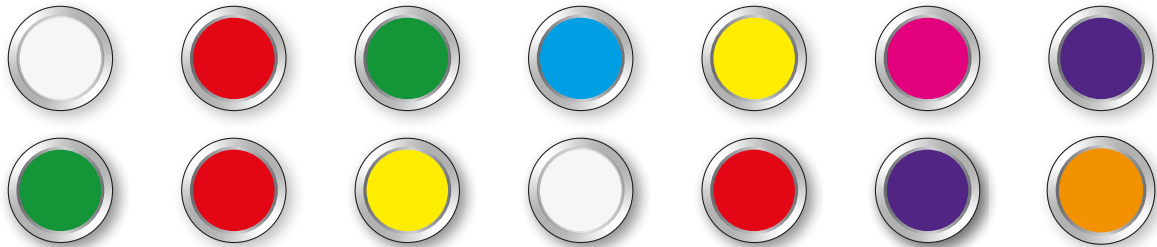
Approvals



Art.-No.	69200	69202
General Info		
Button (NO)	IO-Link device with one button (1 NO contact)	IO-Link device with two buttons (2 NO contacts)
Lighting	IO-Link LED, per button RGB LED	
Operating temperature	-30 °C to +60 °C	
Connection	4-pole, A-coded M12	
Mounting method	Mounting clip	
Protection	IP65	
Dimensions (H x W x D)	35.6 x 40 x 123.2mm	
Accessories		
Laser printer compatible label sheet with 54 labels		Art. No. 69142



Button Configuration Options



Blink modes

Four different blink modes for different applications.

Dimming modes

Adjust the brightness of the RGB LEDs to fit the needs of the installation environment.

Color Options

Choose from five standard or three individually adjustable RGB colors (from a color palette of 16 million colors) for each button.