

MURRELEKTRONIK FOOD AND BEVERAGE CORDSETS

CONNECTED IN ALL ZONES

Processes and products in the food and beverage industry must meet the requirements governing hygiene, cleanliness and corrosion protection.

Being able to easily and completely remove dirt, or other contaminants, is the main requirement for these components. This requirement applies to all three major machine zones:

1. The Food Zone
2. The Spray Zone
3. The Non-food or Dry Zone

Murrelektronik has cordsets specifically designed for each zone.

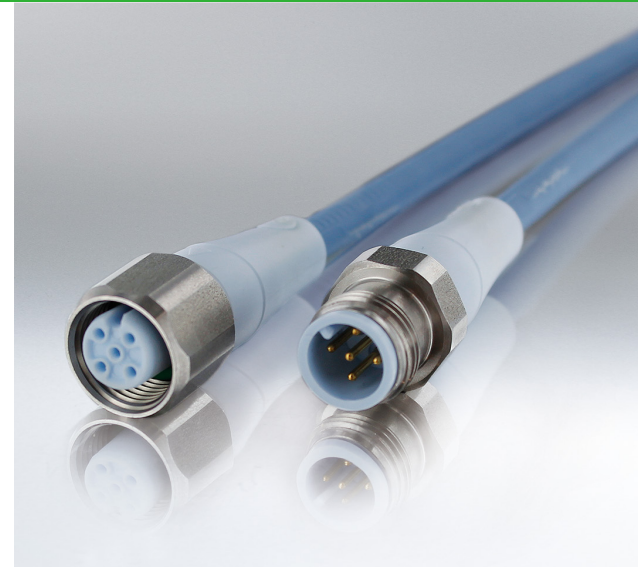
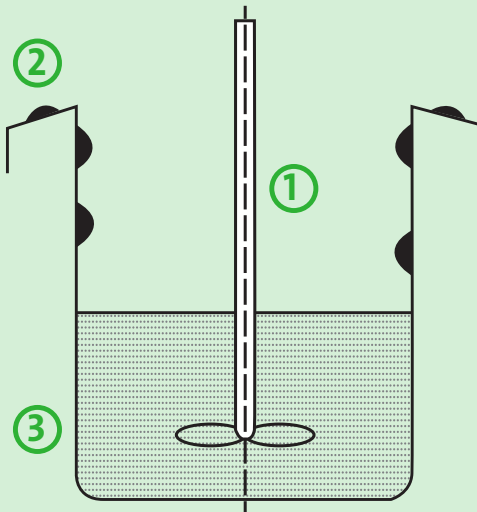
MACHINE ZONES per DIN EN 1672-2 and ISO 14159

- ① Food Zone

② Splash/Spray Zone

③ Non-food or Dry Zone

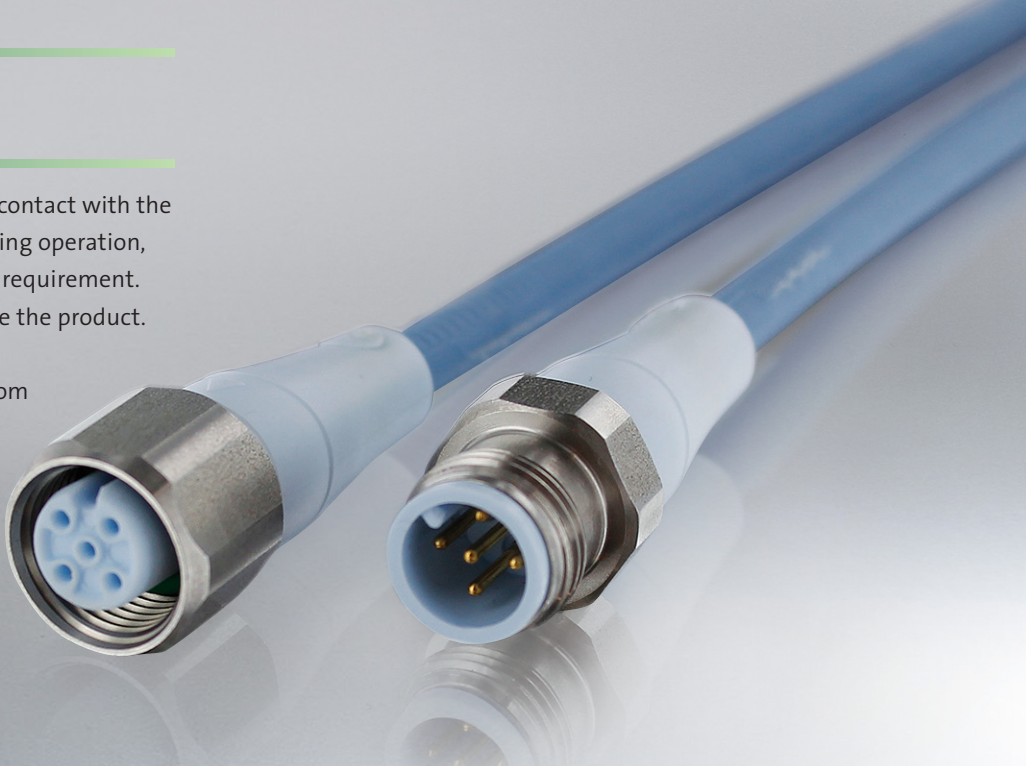
**Zones 1 and 2 use the same
hygienic design principles**



F&B PRO CORDSETS

In areas where every system component comes into contact with the food being processed and then re-enters the processing operation, they must be able to satisfy each and every cleaning requirement. The materials should neither absorb nor contaminate the product.

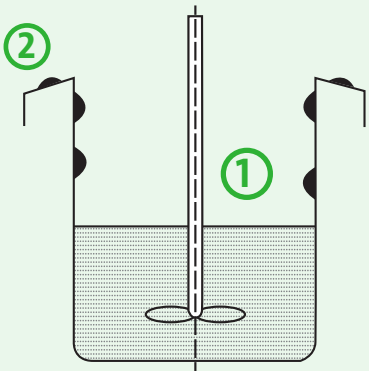
The new Food & Beverage Pro line of M12 cordsets from Murrelektronik, with their polypropylene jackets and molding, fulfill the very latest EHEDG requirements and are suitable for use in all three zones.



- Highly-resistant and robust polypropylene
- FDA-compliant materials
- Designed to meet EHEDG requirements
- Extended temperature range: -40 to +105°C
- IP69K rated: resistant to high-pressure cleaners
- Ice blue jacket makes it easy to see any contaminants
- V4A stainless steel (1.4404) metal parts

RECOMMENDED USAGE:

- Zones 1 and 2
- Aseptic areas (H₂O₂)
- Average cleaning processes
- Intensive use of cleaning agents



Description	Cable Type	3-pole	4-pole	5-pole	8-pole
M12 Male Straight	TPE-S Ice Blue	7024-12001-315xxxx	7024-12021-321xxxx	7024-12041-339xxxx	
M12 Male 90°		7024-12081-315xxxx	7024-12101-321xxxx	7024-12121-339xxxx	
M12 Female Straight		7024-12181-315xxxx	7024-12221-321xxxx	7024-12241-339xxxx	7024-17041-312xxxx
M12 Female 90°		7024-12321-315xxxx	7024-12341-321xxxx	7024-12361-339xxxx	7024-17061-312xxxx
M12 Female 90° LED		7024-12381-315xxxx	7024-12421-321xxxx	7024-12441-339xxxx	
M12 Male Str - M12 Female Str		7024-40001-315xxxx	7024-40021-321xxxx	7024-40041-339xxxx	7024-48001-312xxxx
M12 Male Str - M12 Female 90°			7024-40121-321xxxx	7024-40141-339xxxx	
M12 Male Str - M12 Female 90° LED			7024-40341-321xxxx	7024-40361-339xxxx	
M12 Male 90° - M12 Female 90°			7024-40261-321xxxx	7024-40281-339xxxx	

xxxx = Cable length in meters (m). Ex.: 0300 = 3m

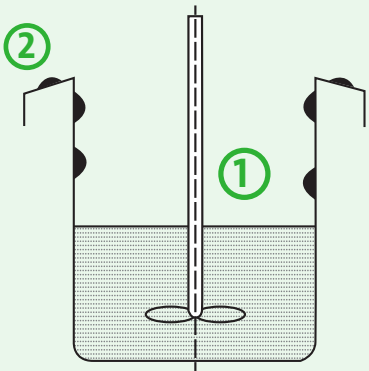


M12 STEEL CORDSETS

In areas where plastic connectors reach their limits, M12 Steel is the right choice. Even if zones 1 and 2 are only high-pressure cleaned for short periods of time, this fully potted, stainless steel cordset is the ‘unbreakable’ alternative with an IP69K rating.

RECOMMENDED USAGE:

- Zones 1 and 2
- Aseptic areas (H₂O₂)
- Frequent cleaning processes
- Intensive use of cleaning agents



- IP69K rated: resistant to high-pressure cleaners
- V4A stainless steel (1.4404) metal housing - longer lasting than standard molded cordsets
- Cables made with FDA compliant materials

Description	Poles	Cable Type	Jacket Color	Article Number
M12 Male Straight, Single Ended	4	TPE-S (336) or PVC (214)	Gray	7044-12021-yyyxxxxx
M12 Male 90°, Single Ended				7044-12101-yyyxxxxx
M12 Female Straight, Single Ended				7044-12221-yyyxxxxx
M12 Male 90°, Single Ended				7044-12341-yyyxxxxx
M12 Female Straight with LED, Single Ended				7044-12292-yyyxxxxx

yyy = Cable type
xxxx = Cable length in meters (m). Ex.: 0300 = 3m

COMPACT

F&B CORDSETS

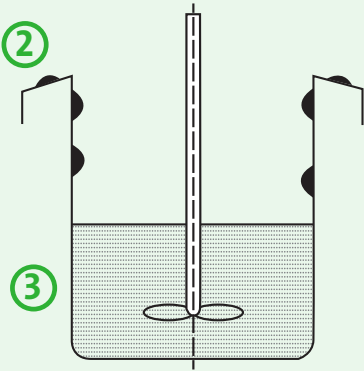
The cleaning requirements for materials are not as stringent in the downstream processes in the dry zone as they are in Zones 1 and 2 because there isn't any direct contact with food. Here, our F&B cordsets are the best solution.



- IP66k rated
- Shock and vibration resistant
- Innovative gasket and radial seal
- Integrated locking mechanism

RECOMMENDED USAGE:

- Zones 2 and 3
- Normal cleaning processes
- Low use of cleaning agents



Description	Poles	Cable Type	Jacket Color	Article Number
M12 Male Straight, Single Ended	4	PVC	Gray	7014-12021-214xxxx
M12 Male 90°, Single Ended				7014-12101-214xxxx
M12 Female Straight, Single Ended				7014-12221-214xxxx
M12 Female 90°, Single Ended				7014-12341-214xxxx
M12 Female Straight with LED, Single Ended				7014-12292-214xxxx

xxxx = Cable length in meters (m). Ex.: 0300 = 3m